



The voice of banking
& financial services

ANNUAL PHYSICAL SECURITY REPORT - 2007

Analysis covering physical security incidents experienced by the main High Street Banks

SUMMARY POINTS:

- Robberies – lowest annual number recorded, 11% below 2006;
- Cash-in-Transit – attacks down 8%; losses down 23% compared to 2006
- ATM Attacks – small increase in numbers; losses up 19% compared to 2006

Prepared by the British Bankers' Association

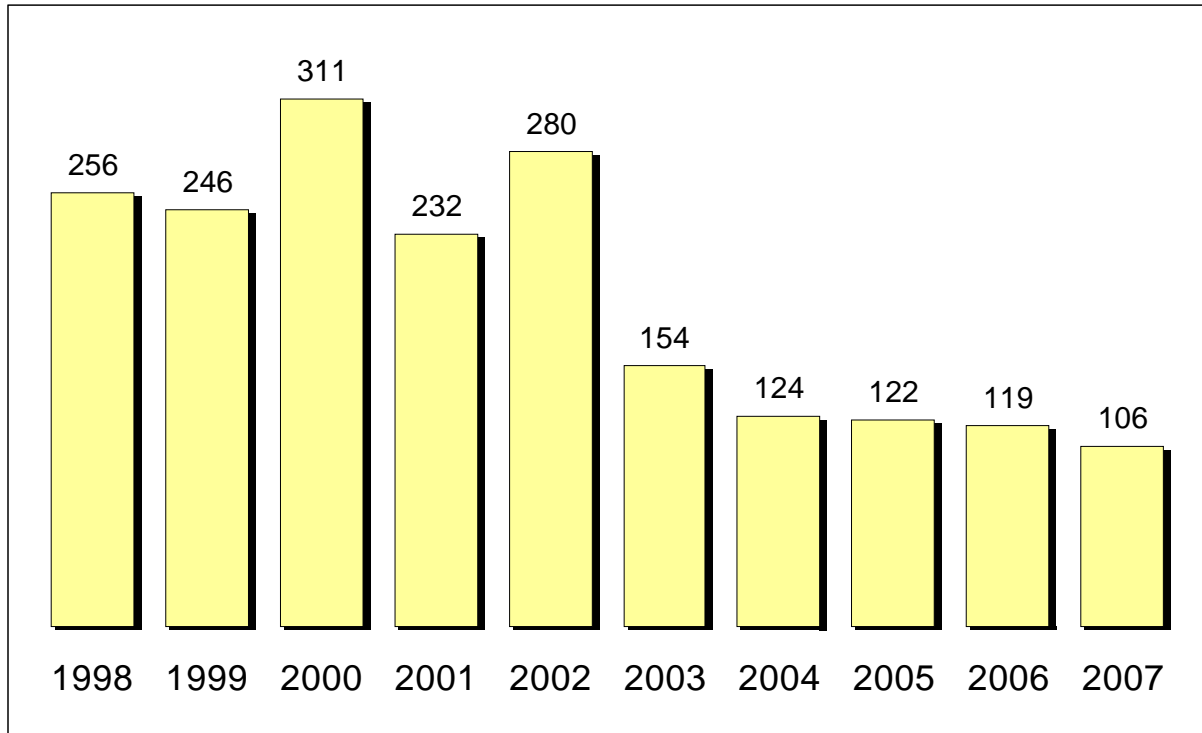
Contacts:

Janine Randolph
Statistics & Security Analyst
Janine.randolph@bba.org.uk
020 216 8834

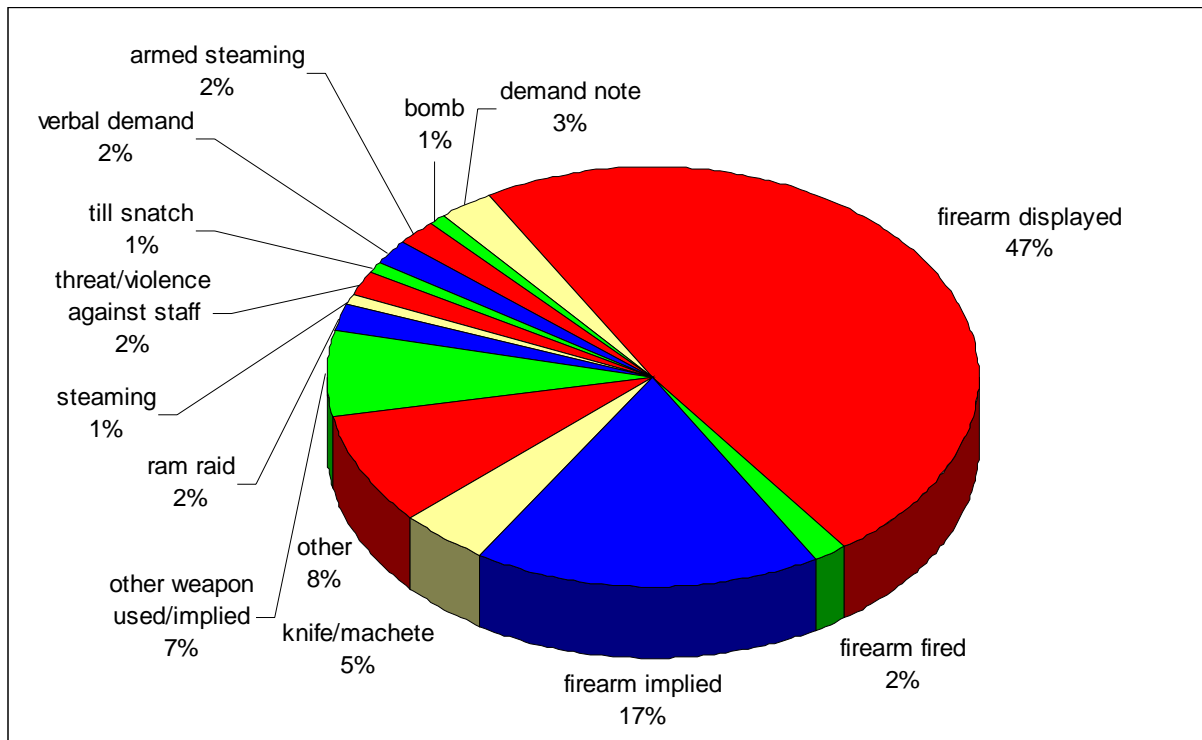
Richard Cook
Financial Crime Director
Richard.cook@bba.org.uk
020 7216 8823

ANNUAL PHYSICAL SECURITY ANALYSIS - 2007

Annual Number of Branch Robberies



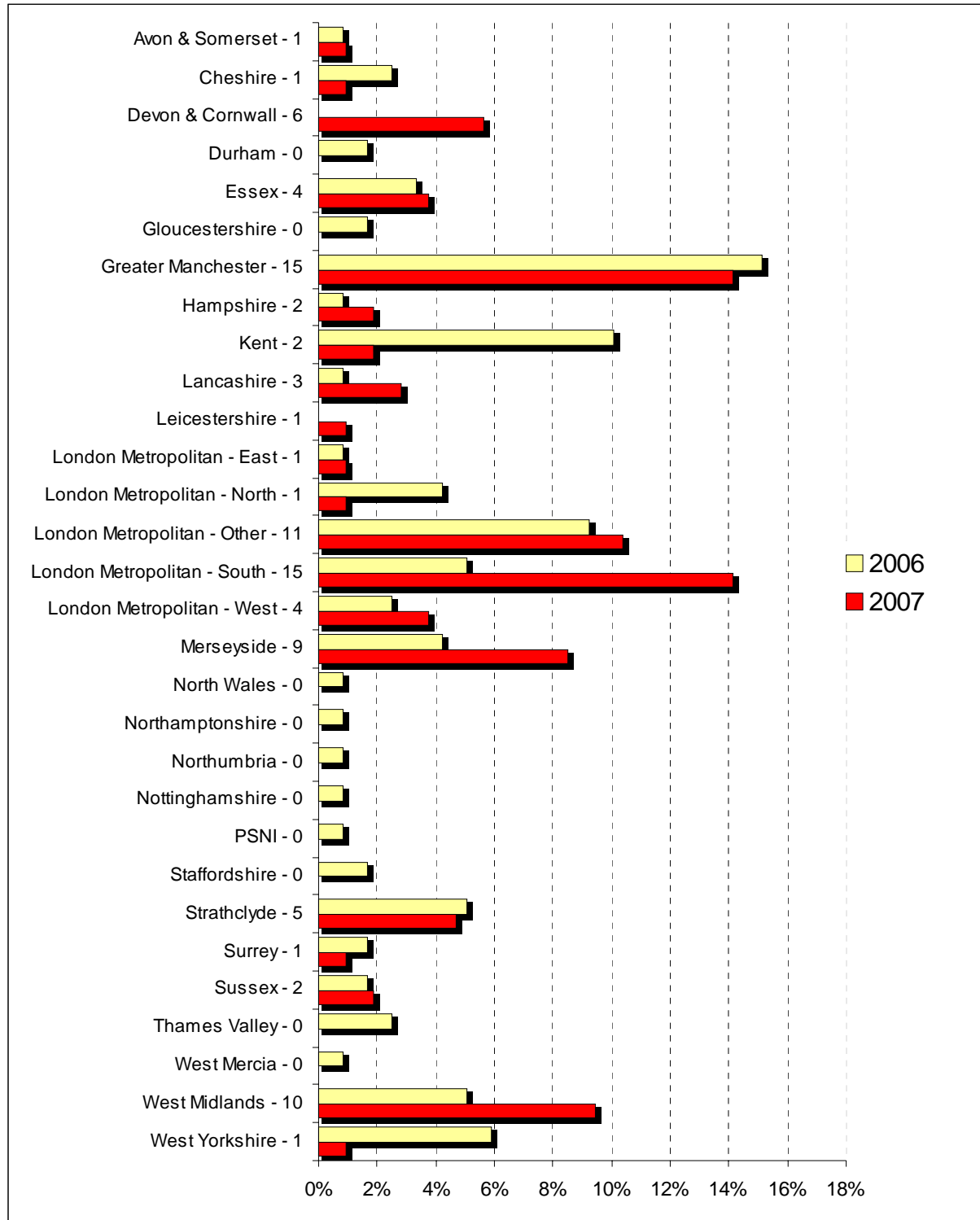
Type of Robbery



ANNUAL PHYSICAL SECURITY ANALYSIS - 2007

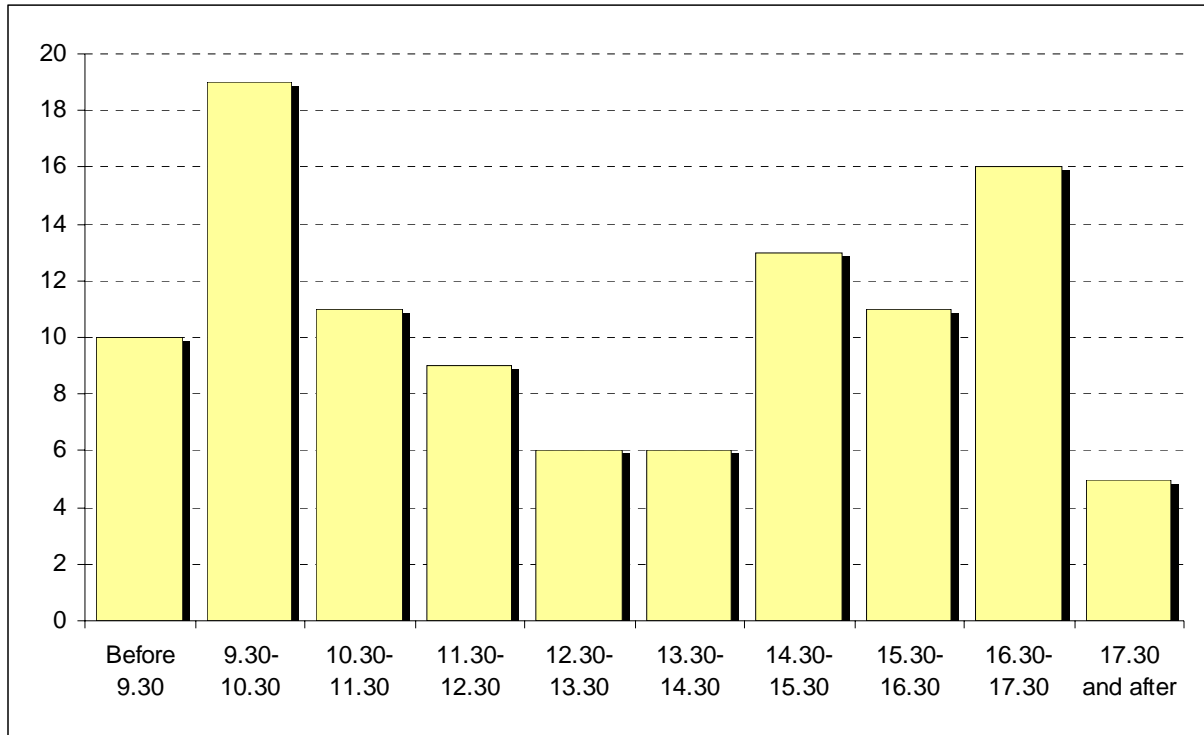
Breakdown of Police Force Area (share of robberies)

In 2007 the London Metropolitan force covered 31% of robberies compared to 22% in 2006 and 10% in 2005. The numbers next to the police force names represent the number of robberies for that force in 2006. Please note not all police forces are shown. North, South, East and West Metropolitan areas refer to inner London and Other refers to outer London.

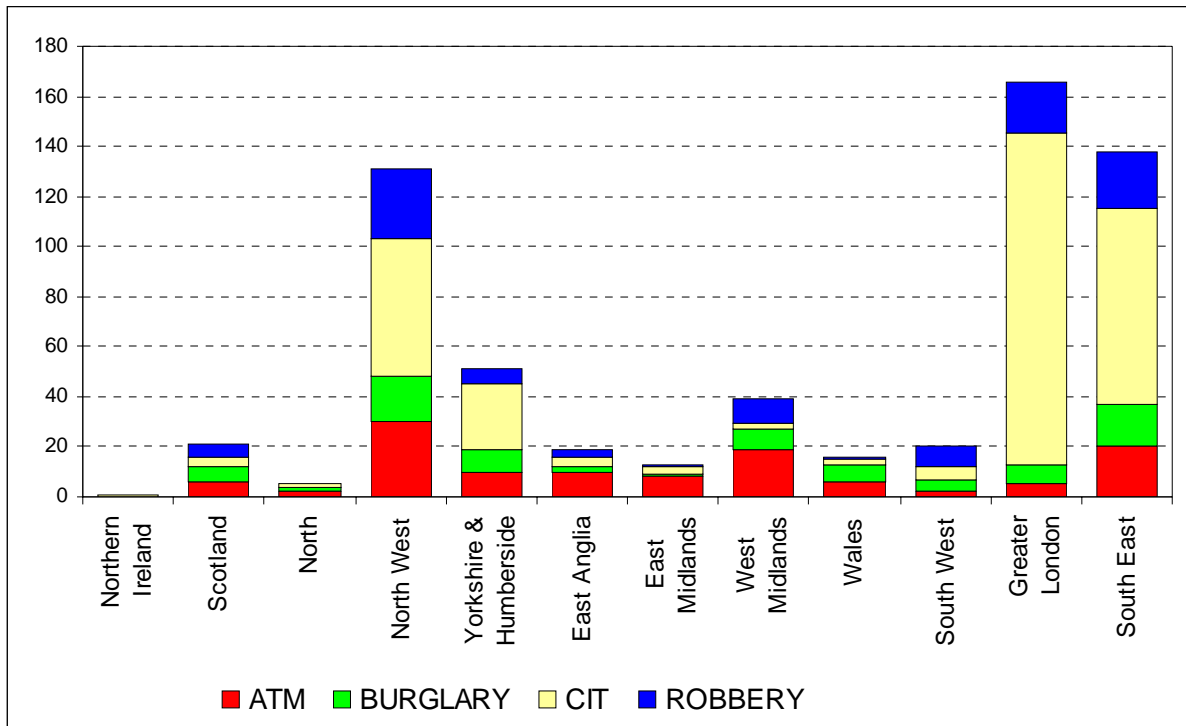


ANNUAL PHYSICAL SECURITY ANALYSIS - 2007

Time of Day When Robberies Occurred

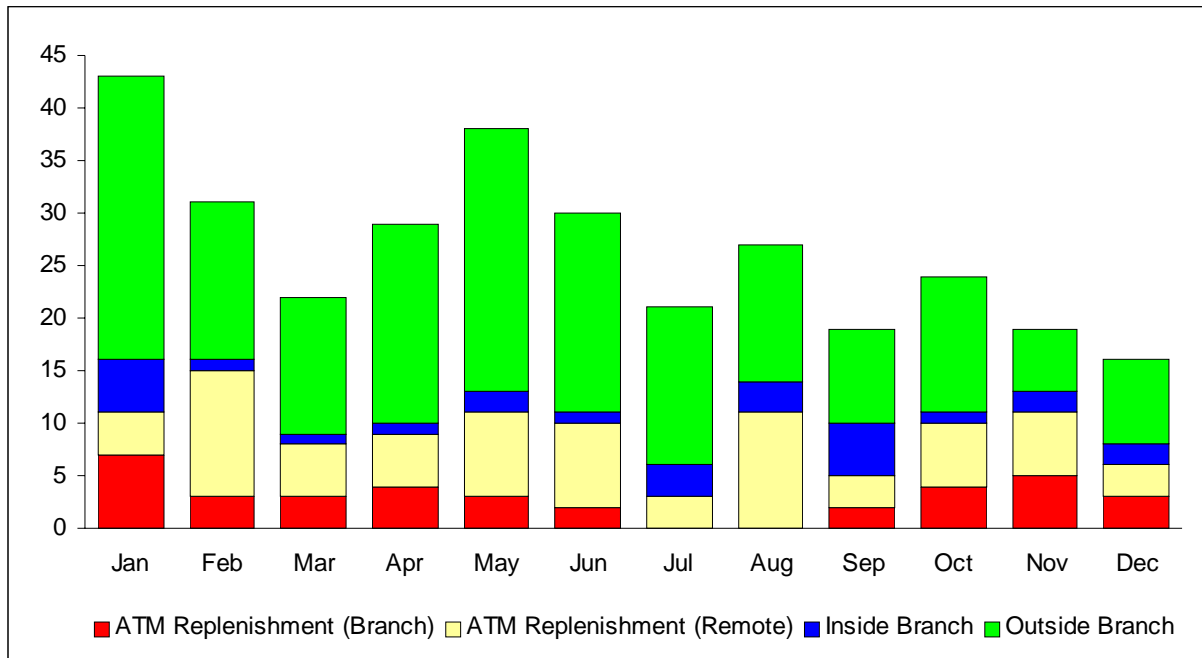


Incidents Split by Region

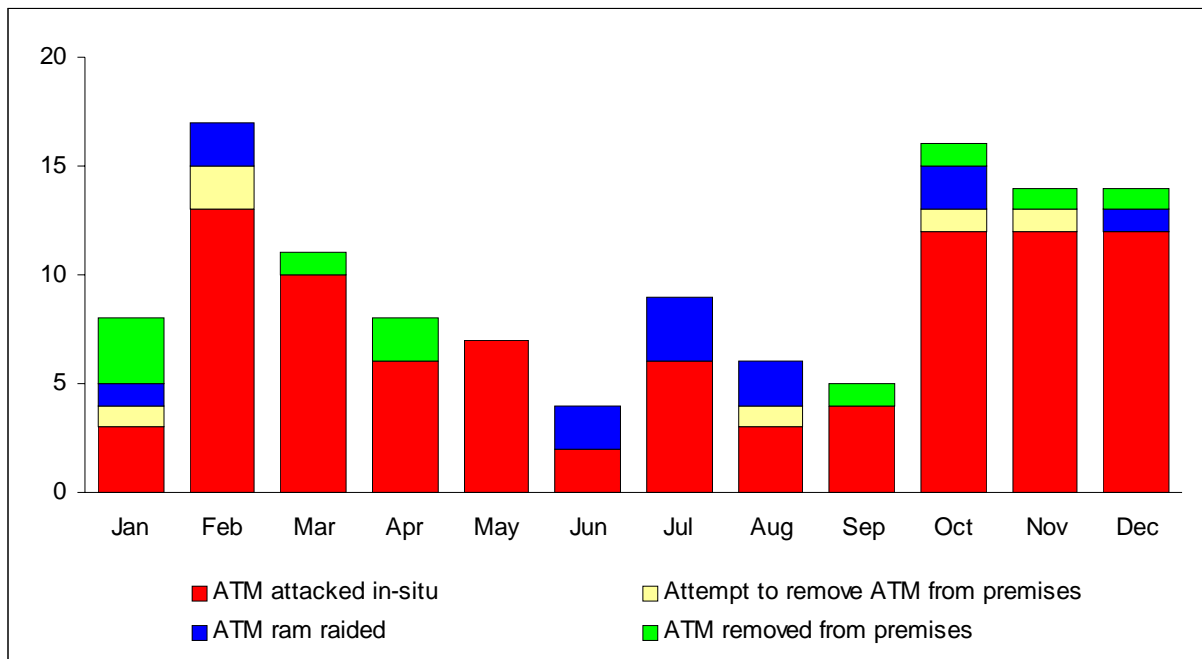


ANNUAL PHYSICAL SECURITY ANALYSIS - 2007

Monthly Breakdown of Attacks on Cash-in-Transit Guards

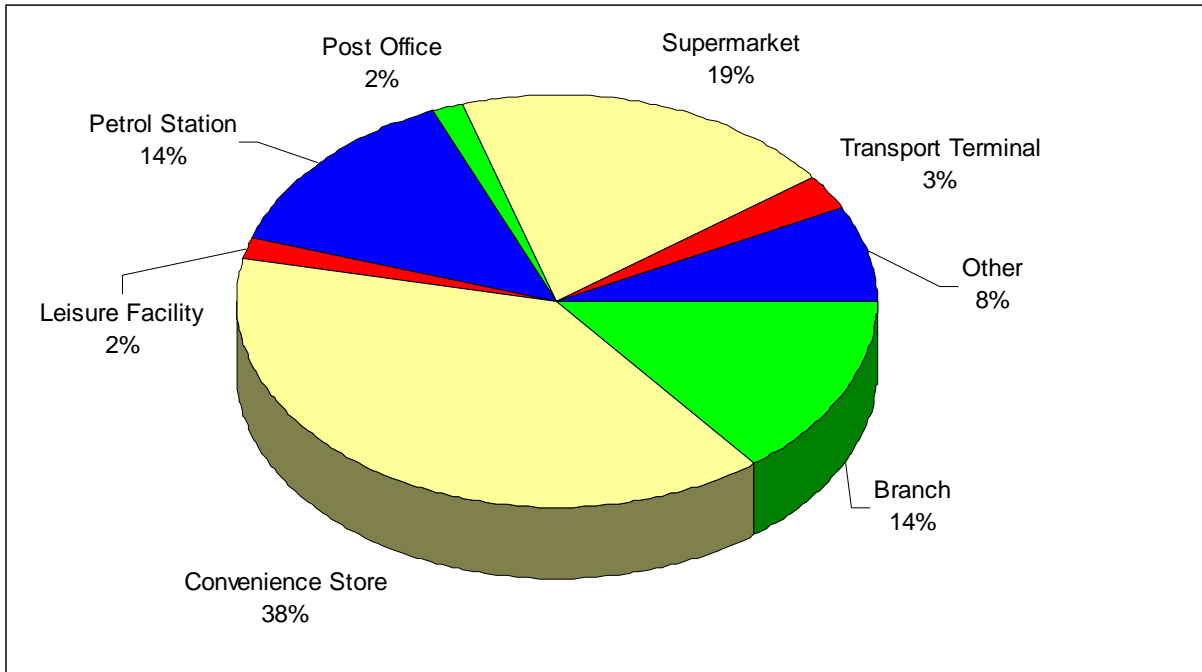


Monthly Breakdown of Attacks on ATMs

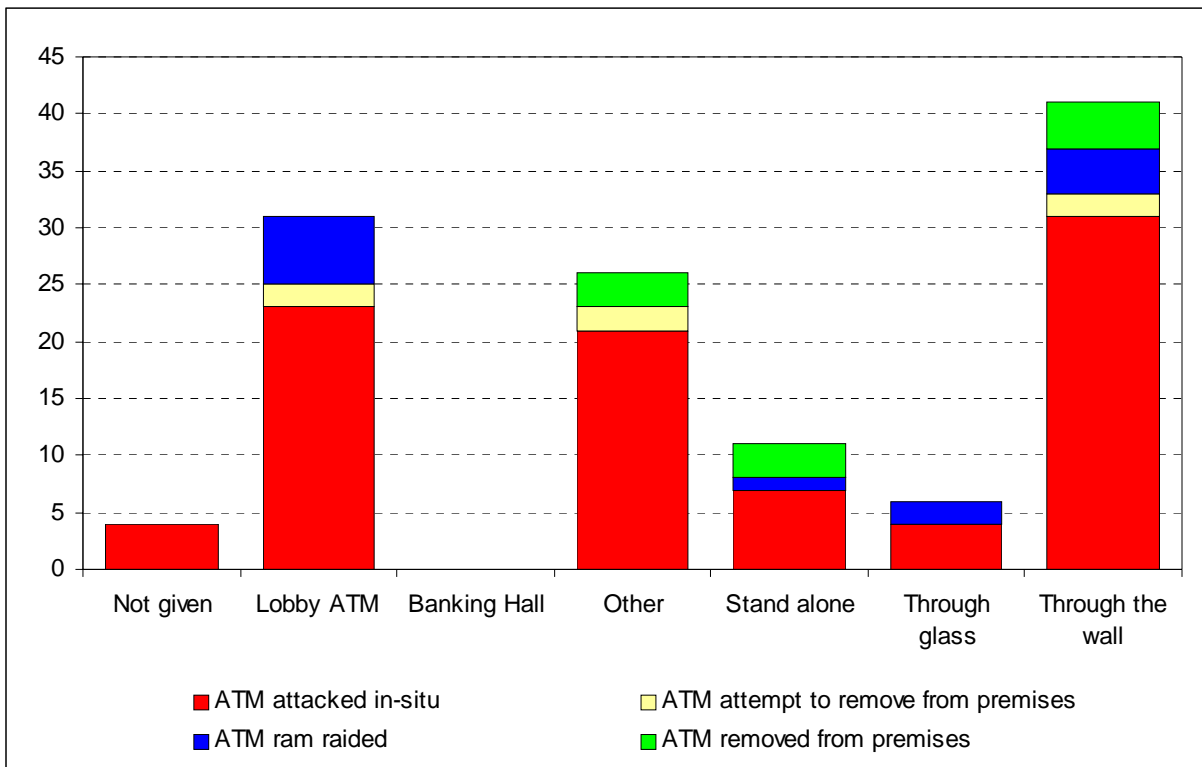


ANNUAL PHYSICAL SECURITY ANALYSIS - 2007

ATM Attacks by Location



ATM Attacks by Type of ATM



ANNUAL PHYSICAL SECURITY ANALYSIS - 2007

ATM and CIT Attacks Split by Police Force Area (not all forces shown)

Police Force	2006		2007		Change on Year	
	ATM	CIT	ATM	CIT	ATM	CIT
Avon & Somerset	2	2	2	1	0	-1
Bedfordshire	0	0	0	0	0	0
British Transport Police	0	0	2	0	2	0
Cambridgeshire	0	0	7	3	7	3
Central Scotland	1	1	1	0	0	-1
Cheshire	3	5	11	4	8	-1
City of London	0	0	0	0	0	0
Cleveland	1	0	0	0	-1	0
Cumbria	1	1	0	0	-1	-1
Derbyshire	4	2	0	3	-4	1
Devon & Cornwall	0	3	0	1	0	-2
Dorest	2	0	0	1	-2	1
Dunfries & Galloway	0	0	0	0	0	0
Durham	0	1	0	1	0	0
Dyfed Powys	0	0	2	0	2	0
Essex	2	24	3	16	1	-8
Fife	0	0	0	0	0	0
Gloucestershire	1	0	0	2	-1	2
Grampian	0	0	0	0	0	0
Greater Manchester	12	41	11	36	-1	-5
Gwent	2	0	1	0	-1	0
Hampshire	4	1	1	3	-3	2
Hertfordshire	0	2	2	4	2	2
Humberside	3	1	2	2	-1	1
Kent	7	10	11	2	4	-8
Lancashire	6	3	2	7	-4	4
Leicestershire	5	1	2	1	-3	0
Lincolnshire	2	1	5	0	3	-1
London Metropolitan - Other	4	63	0	63	-4	0
London Metropolitan - South	0	44	1	29	1	-15
London Metropolitan - West	0	7	0	10	0	3
London Metropolitan - North	0	32	2	52	2	20
London Metropolitan - East	2	25	0	16	-2	-9
Lothians & Borders	0	0	0	0	0	0
Merseyside	6	14	6	11	0	-3
Norfolk	1	0	2	0	1	0
North Wales	1	1	0	0	-1	-1
North Yorkshire	1	1	0	3	-1	2
Northern	1	0	0	0	-1	0
Northamptonshire	3	1	3	1	0	0
Northumbria	2	2	2	0	0	-2
Nottinghamshire	1	1	3	0	2	-1
PSNI	0	0	0	1	0	1
South Wales	5	1	3	2	-2	1
South Yorkshire	4	5	1	1	-3	-4
Staffordshire	3	2	5	1	2	-1
Strathclyde	0	3	5	4	5	1
Suffolk	0	1	0	1	0	0
Surrey	0	6	1	7	1	1
Sussex	3	1	0	1	-3	0
Tayside	0	0	0	0	0	0
Thames Valley	10	1	0	6	-10	5
Warwickshire	3	0	1	0	-2	0
West Mercia	0	0	4	1	4	1
West Midlands	3	15	11	1	8	-14
West Yorkshire	2	21	4	20	2	-1
Wiltshire	1	2	0	1	-1	-1
TOTAL	114	348	119	319	5	-29

ANNUAL PHYSICAL SECURITY ANALYSIS - 2007

Mapping of Incidents in 2007

- ATM
- burglary
- CIT
- robbery

